

INNOVATION THROUGH DESIGN

EZI-FLOW™ GALVANISED DRAINAGE SYSTEM



7STEEL EZI-FLOW™

7Steel products are hot dipped galvanised to provide long life and a quality finish.

- Hot Dip Galvanised to AS/NZS 4680:2006
- R3 Durability rating in accordance with AS/NZS 2699.3:2002
- 130mm wide and 90mm deep for extra capacity
- Cleaning access through hinged access hatch
- Easy to install (DIY)
- Comes with easy fit accessories (see over page)
- Comes in 3 standard lengths 2.4m, 3.0m and 3.6m
- For driveways, entertainment areas, raised lawns.



Ezi-Flow Accessories

7STEEL

Building Solutions

FOR INFORMATION ABOUT
OUR PRODUCTS AND SERVICES
PLEASE VISIT OUR WEBSITE

www.7steel.com.au

EZI-FLOW™ / GALVANISED DRAINAGE SYSTEM

EASY TO USE

EZI Flow is simple to install.

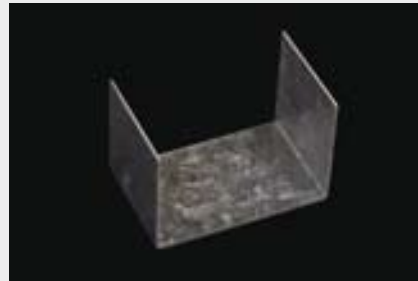
1. Dig a trench approximately 180mm wide and 110mm deep, this will allow for 20mm of sand or sand/cement mix around the drain.
2. Fit accessories to EZI Flow using silicone and pop rivets for extra strength
3. Position EZI Flow and backfill, pack down backfill to ensure no movement and continue to fill to height required.

STOCK CHART

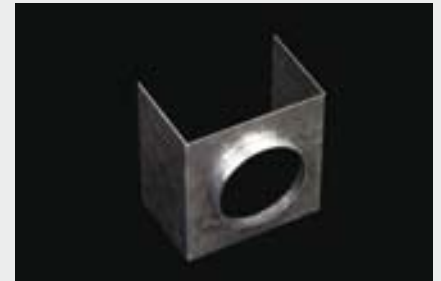
Code	Outside Dimensions	Grate Dimension	Length
EF24	130 x 90	145 x 5	2400
EF30	130 x 90	145 x 5	3000
EF36	130 x 90	145 x 5	3600

* All dimensions in mm

ACCESSORIES



Slip Joint (EFSJ)



Bottom Outlet (EFBO)



Blank End (EFBE)



Pipe Flange (EFPF)

ENQUIRIES AND SALES

NSW - SYDNEY

142 Magowar Road
Girraween NSW 2145
Ph: 02 8071 4383
Fax: 02 9896 5968
Enquiries: 1-800-7-STEEL (78335)
E-mail: sales@7steel.com.au

NSW - REGIONAL

Mobile: 0402 634 928
Enquiries: 1-800-7-STEEL (78335)
E-mail: grantthiaux@7steel.com.au

VICTORIA - MELBOURNE

46 Chelmsford Street,
Williamstown VIC 3016
Mobile: 0419 575 398
Enquiries: 1-800-7-STEEL (78335)
E-mail: shaiwalker@7steel.com.au

QUEENSLAND - GYMPIE

7-9 Woodbine Street
Gympie QLD 4570
Ph: 07 5482 5322
Fax: 07 5482 7072
Mobile: 0428 677 089
Enquiries: 1-800-7-STEEL (78335)
E-mail: sales@7steel.com.au

QUEENSLAND - MACKAY

31 Evans Road
North Mackay QLD 4740
Mobile: 0434 077 315
Fax: 07 4957 2115
Enquiries: 1-800-7-STEEL (78335)
E-mail: tonysmith@7steel.com.au

7STEEL

Building Solutions

FOR INFORMATION ABOUT
OUR PRODUCTS AND SERVICES
PLEASE VISIT OUR WEBSITE

www.7steel.com.au